

FLAT CABLE

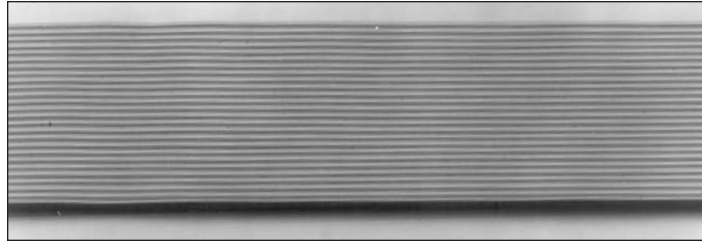
GRAY FLAT CABLE

0.050" CENTERS

300 VOLT
UL STYLE 2651
RoHS COMPLIANT

GRAY FLAT CABLE APPLICATIONS:

- PC Board to PC Board Interconnects
Where Space is a Premium
- Flexible Interconnects Within Computer and Business Machine Cabinetry



CHARACTERISTICS

OPERATING TEMPERATURE:

- -20°C to 105°C

VOLTAGE RATING:

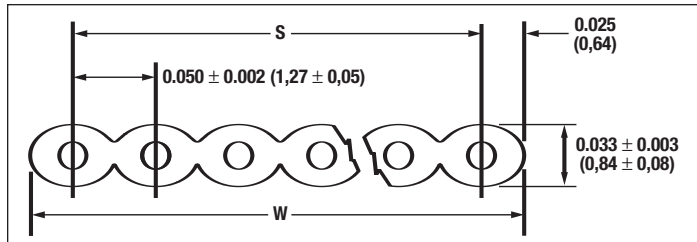
- 300 Volt

COLOR DESCRIPTION:

- Color Code: Gray with Red Stripe on Leading Edge

PRODUCT DESCRIPTION:

- Conductor: Stranded Tinned Copper Conductors on 0.050" (1,27mm) Centers
- Insulation: PVC



SPECIFICATIONS

- Capacitance: 14 pF/ft (45,9 pF/m) Nom. at 1MHz†
 - Propagation Delay: 1.4 ns/ft-0.18 ns (4,6 ns/m-0,18 ns) Rise Time Pulse at 1 MHz†
 - Impedance: 105 Ohms, Nom.†
 - Crosstalk: Nom. Between 2 Adjacent Signal Lines at 1 ns Rise Time Over 10 ft (3,05m) Length, Near End: 3.2%; Far End: 11.5%†
 - UL AWM Style 2651
 - RoHS Compliant
- † Transmission Characteristics:
Ground-Signal-Ground-Signal, etc.
With All Grounds Common

28 AWG (0,09mm²), 7/36 (7x0,13mm), Insulation Thickness: 0.010" (0,25mm)

| Alpha Part No. | No. of Conductors | Nominal Overall Width (W) | | Nominal Span (S) | |
|----------------|-------------------|---------------------------|-------|------------------|-------|
| | | Inches | mm | Inches | mm |
| 3580/9 | 9 | 0.45 | 11,43 | 0.40 | 10,16 |
| 3580/10 | 10 | 0.50 | 12,70 | 0.45 | 11,43 |
| 3580/14 | 14 | 0.70 | 17,78 | 0.65 | 16,51 |
| 3580/15 | 15 | 0.75 | 19,05 | 0.70 | 17,78 |
| 3580/16 | 16 | 0.80 | 20,32 | 0.75 | 19,05 |
| 3580/20 | 20 | 1.00 | 25,40 | 0.95 | 24,13 |
| 3580/24 | 24 | 1.20 | 30,48 | 1.15 | 29,21 |
| 3580/25 | 25 | 1.25 | 31,75 | 1.20 | 30,48 |
| 3580/26 | 26 | 1.30 | 33,02 | 1.25 | 31,75 |
| 3580/34 | 34 | 1.70 | 43,18 | 1.65 | 41,91 |
| 3580/37 | 37 | 1.85 | 46,99 | 1.80 | 45,72 |
| 3580/40 | 40 | 2.00 | 50,80 | 1.95 | 49,53 |
| 3580/50 | 50 | 2.50 | 63,50 | 2.45 | 62,23 |
| 3580/60 | 60 | 3.00 | 76,20 | 2.95 | 74,93 |
| 3580/64 | 64 | 3.20 | 81,28 | 3.15 | 80,01 |



Underwriters Laboratories Inc.



Underwriters Laboratories Inc.



RoHS Compliant

AVAILABILITY

- 100 ft (30,5m) put-ups, may contain multiple lengths



Toll Free: 1-800-52 ALPHA • Telephone: 908-925-8000 • Fax: 908-925-6923
 Europe/UK Telephone: +44 (0) 1932 772422 • Europe/UK Fax: +44 (0) 1932 772433

Web Site: www.alphawire.com
 Email: info@alphawire.com